

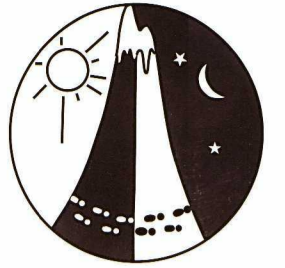


Down South - Nannup

37th Australasian Rogaining Championships

(incorporating the WA Schools Championships)

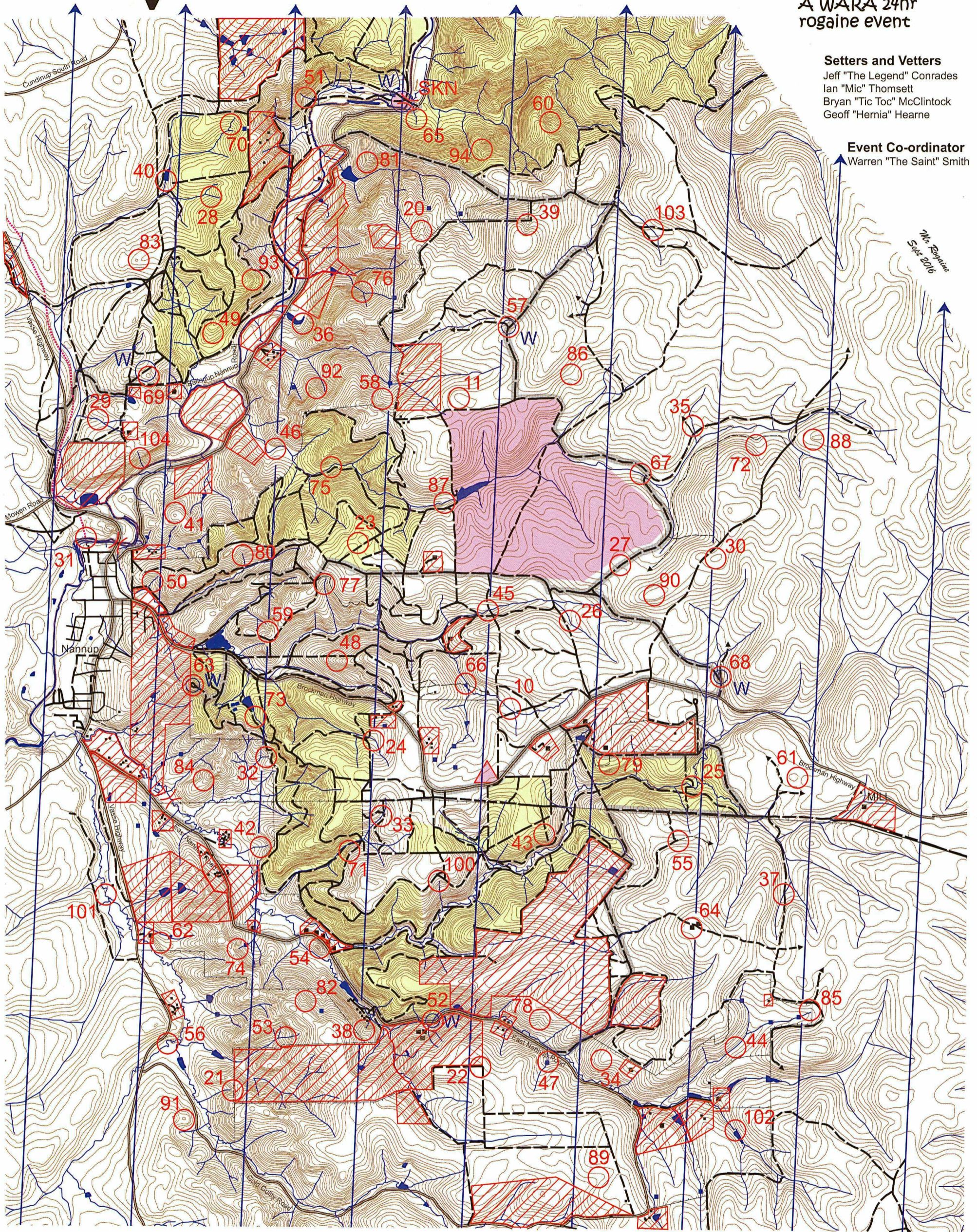
September 17th and 18th 2016



A WARA 24hr
rogaine event

Setters and Vettors
 Jeff "The Legend" Conrades
 Ian "Mic" Thomsett
 Bryan "Tic Toc" McClintock
 Geoff "Hernia" Hearne

Event Co-ordinator
 Warren "The Saint" Smith



LEGEND

- | | | | |
|---------------------------|--|----------------------|--|
| Hash House | | Patrolled Road | |
| Control | | Road, Bitumen | |
| Water Drop | | Road, Minor Bitumen | |
| Soup Kitchen / water drop | | Road, Major Gravel | |
| Contours | | Road, Minor Gravel | |
| Magnetic north lines | | Munda Biddi Track | |
| Out of Bounds | | Road, Continuation | |
| Watercourse - major/minor | | Powerline | |
| Crossing | | Fence | |
| Dams | | Pine Plantation | |
| Building | | Water catchment area | |

Event number



SCALE 1:50,000, 5 metre contour interval



WARA gratefully acknowledges the land holders and managers for their permission and support...

Farmers:
 Frank and Jill Colreavy (HH), George Brajkovich, Charlie Cannon, Greg Crothers, Kim and Kerri Dunnett, Sasha Foley, Patricia Fraser, Vic and Cynthia Groves, Scott and Tamara Hanrahan, Phil and Trish Hewitt, Greg Lee, Rod Lee, Michael Lindsay, Geoff and Gail Musto, Graeme and Di Ness, Tom and Cindy Percy, Rhoda Rowe, Mark Scott, Ron Stallard

Richard Hartwell - Forest Products Commission
 David Gibellini - WAPRES
 Andy Sandri - DPaW Kirup
 Nannup Shire - Tony Dean, Louise Stokes, Chris Wade

WARA is supported and sponsored by :



Department of
Sport and Recreation



Emergency satellite number +881 622 449700
Warren Smith 0407 773 697



Down South Australasian Rogaine Championships

September 17th and 18th 2016



No.	Description	Points	No.	Description	Points	Important Information
10	The watercourse	10	60	The gully	60	Safety cards From 11.30am Saturday
11	The spur - a small knoll	10	61	The broad knoll	60	
			62	The knoll	60	Briefing 11.45am Saturday
20	The spur	20	63	Tank 7 40m at 360 degrees	60	
21	The gully	20	64	The Carlotta fire tower - SW side	60	Start 12 noon Saturday
22	A fence corner	20	65	The watercourse	60	
23	A gravel pit - North side	20	66	The dam - north side	60	Finish 12 noon Sunday
24	The watercourse	20	67	The watercourse	60	
25	The track / creek junction	20	68	A water sump - north side	60	Hash House Opens at 5pm Saturday Closes by 1pm Sunday
26	The watercourse	20	69	The knoll	60	
27	The track crest - 50m at 310 degrees	20				Soup Kitchen Opens at 6pm Saturday Closes at 6am Sunday
28	The southern watercourse	20	70	The northern watercourse	70	
29	The watercourse	20	71	A rocky outcrop	70	Sunset Saturday - 6.10 pm
			72	The shallow gully	70	
30	The broad knoll	30	73	The watercourse - an old dam	70	Moonrise Saturday - 6.47 pm
31	A walk bridge - north end - 20m at 42 degrees	30	74	The watercourse - head of	70	
32	The gully on a fence	30	75	The watercourse	70	Moonset Sunday - 7.07 am
33	The watercourse	30	76	The watercourse	70	
34	The spur	30	77	The watercourse	70	Sunrise Sunday - 6.11 am
35	The watercourse	30	78	The gully	70	
36	The dam - south east side	30	79	The track bend	70	Late Penalty 10 points per minute or part minute.
37	The watercourse / track junction	30				
38	The watercourse - head of	30	80	The watercourse	80	DSQ if later than 12.30 pm
39	The gully	30	81	The rocky spur	80	
			82	The spur	80	Controls Used
40	The dam - southern side	40	83	The knoll	80	
41	A fence corner on One Tree Hill	40	84	The gully - head of	80	Total Points 82
42	The water course	40	85	The watercourse - head of	80	
43	A power pole 15m at 270 degrees - Pole number NP 166/4	40	86	The broad spur	80	4470
44	The watercourse and a fence junction	40	87	The watercourse - a water pipe crossing	80	
45	The watercourse	40	88	The knoll - western edge	80	
46	The watercourse on a bend	40	89	The shallow gully	80	
47	The dam - east end	40				
48	The spur	40	90	The broad knoll - south side	90	
49	The spur	40	91	The knoll	90	
			92	The spur	90	
50	The watercourse	50	93	The spur	90	
51	The watercourse - a junction	50	94	The spur	90	
52	Under a bridge	50				
53	The watercourse	50	100	The gully	100	
54	The rocky knoll - south east end	50	101	The watercourse bend	100	
55	The track junction	50	102	The dam - north west side	100	
56	A bridge north east end	50	103	The watercourse	100	
57	The southern track junction	50	104	The watercourse	100	
58	The spur - bottom of	50				
59	The gully	50	SKN	Soup kitchen - west side of the bridge	Water drop	